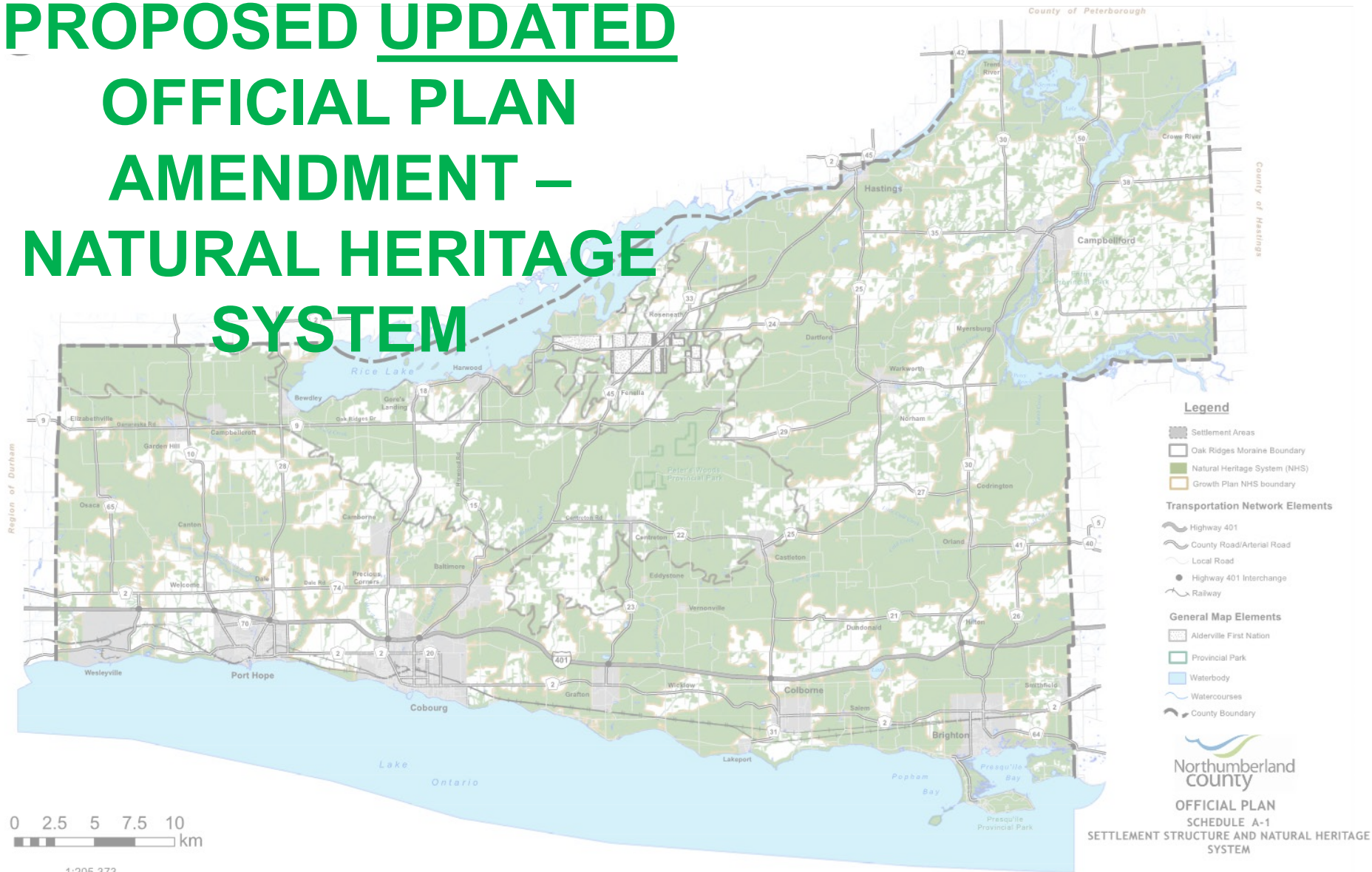


# PROPOSED UPDATED OFFICIAL PLAN AMENDMENT – NATURAL HERITAGE SYSTEM

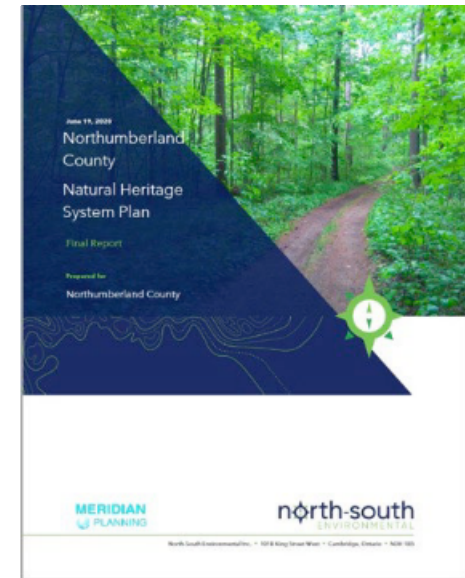
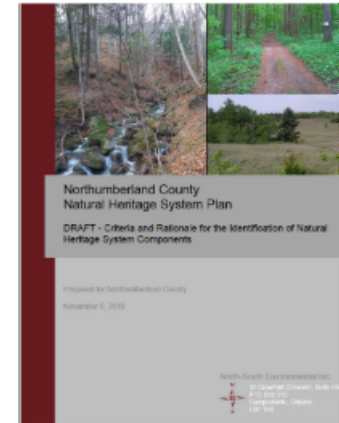
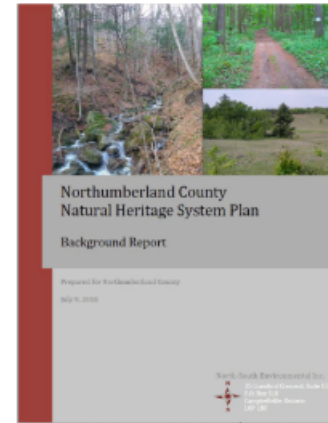


0 2.5 5 7.5 10 km

1:205,373

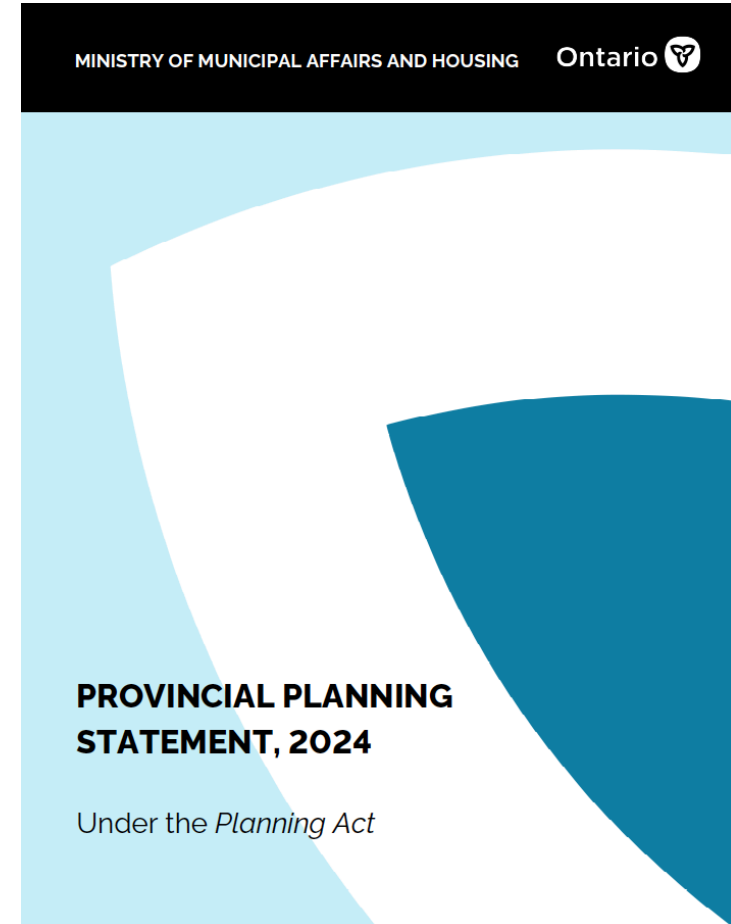
# Process leading to Updated OPA

- Current Official Plan does not include a natural heritage system ('NHS') policy framework
- The Provincial Policy Statement (2014) required that such an NHS be established
- The Growth Plan (2017) provided for the establishment of a Growth Plan NHS
- Background report completed - 2018
- Consultation on work completed to date – late 2018
- Development of criteria to identify features and assign significance – 2019
- Final report – June 2020
- Public OH on March 29, 2021 and PM on April 7, 2021
- OPA 1 then adopted by Council in December 2021



# Process leading to Updated OPA

- Growth Plan now repealed as of October 20, 2024
- Updated Provincial Planning Statement (2024) continues to require that a NHS be established
- Definition of NHS in PPS (2024) indicates that the 'Province has a recommended approach for identifying natural heritage systems...'
- Based on a review of the work completed by the Province – it is recommended that the Growth Plan NHS be incorporated as part of the Northumberland NHS
- This means that the spatial extent of the NHS in OPA 1 as adopted by Council is not recommended to materially change
- However, a significant 'un-winding' of the policy framework is now needed to ensure consistency with the PPS (2024)
- This means new schedules and updated policies are required

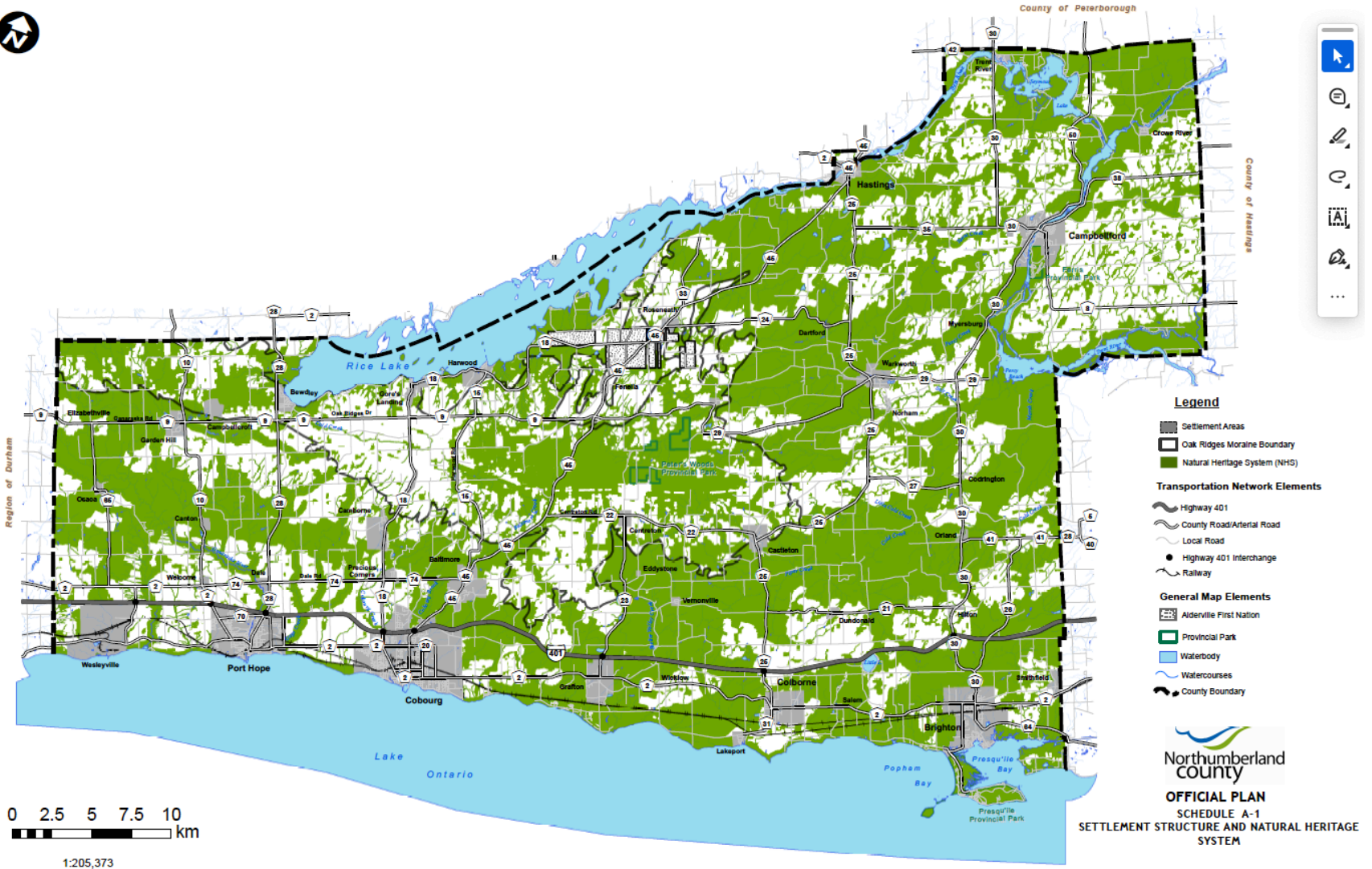


# All OPA 1 Schedules Revised

- The Growth Plan NHS boundary will be deleted from **Schedule A-1** and all lands within the previous Growth Plan NHS will now be a part of the County's NHS. All of the other natural features and areas previously shown will continue to be shown
- The NHA designation on **Schedule A-2** will be divided into two separate designations. The new NHA1 designation will be a primary designation and only include Provincially significant wetlands and Regionally important wetlands. The new NHA2 designation will be an overlay designation (sitting on top of any other designation) and only include significant woodlands (as modified) and significant ANSI's.
- **Schedule B-1** will be deleted – its only purpose was to identify spatially where different Provincial policies applied
- Former **Schedule B-2** becomes Schedule B-1

*Updated Schedules on next slides*

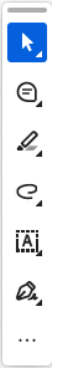
# NEW Schedule A-1 (Natural Heritage System)



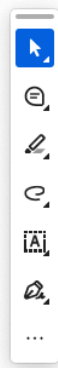
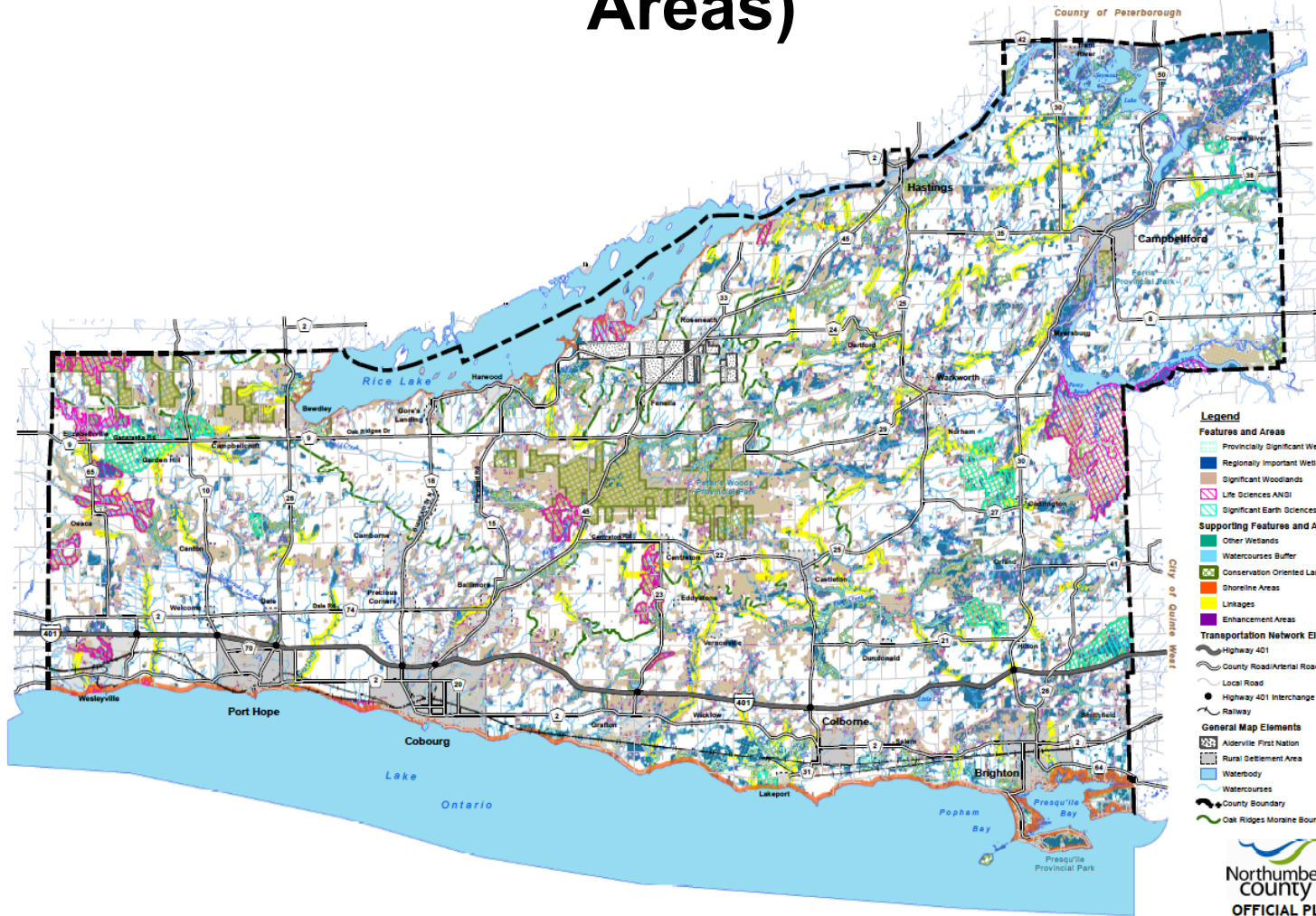
# NEW Schedule A-2 (Land Use)



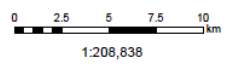
0 2.5 5 7.5 10 km



# NEW Schedule B-1 (Natural Heritage Features and Areas)



- Legend**
- Features and Areas**
    - Provincially Significant Wetlands and Coastal Wetlands
    - Regionally Important Wetlands
    - Significant Woodlands
    - Life Sciences ANDI
    - Significant Earth Sciences ANDI
  - Supporting Features and Areas**
    - Other Wetlands
    - Watercourses Buffer
    - Conservation Oriented Lands
    - Shoreline Areas
    - Linkages
    - Enhancement Areas
  - Transportation Network Elements**
    - Highway 401
    - County Road/Arterial Road
    - Local Road
    - Highway 401 Interchange
    - Railway
  - General Map Elements**
    - Alderville First Nation
    - Rural Settlement Area
    - Waterbody
    - Watercourses
    - County Boundary
    - Oak Ridges Moraine Boundary

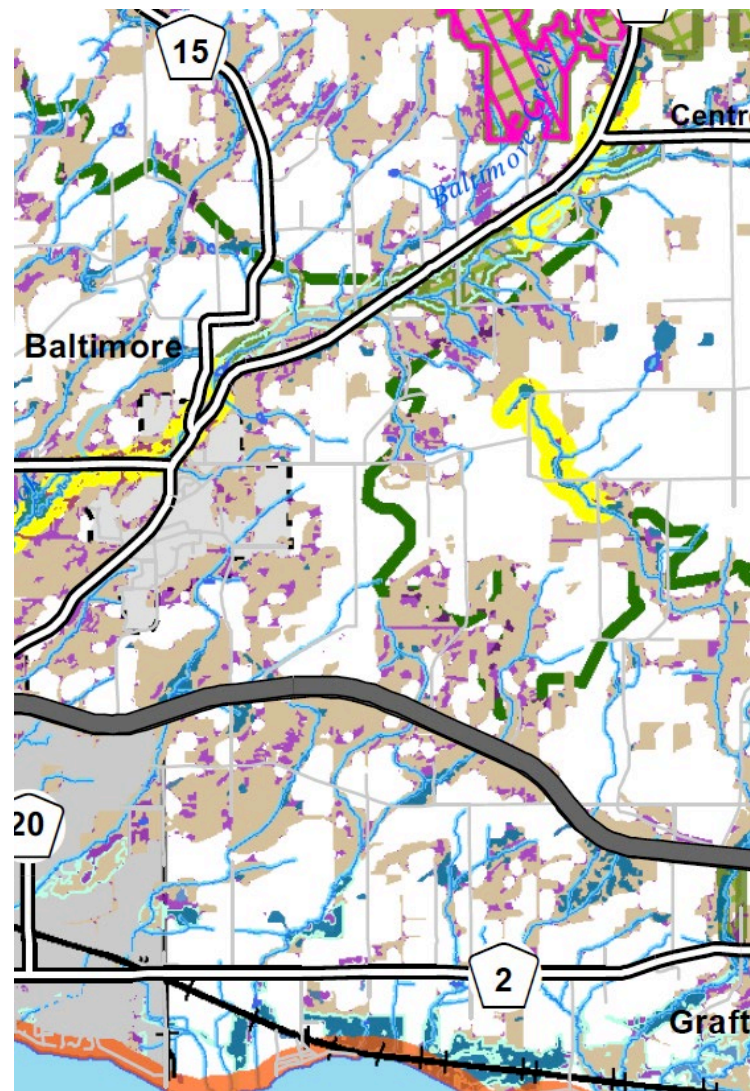


Northumberland  
county  
**OFFICIAL PLAN**  
SCHEDULE B-1  
NATURAL HERITAGE FEATURES AND AREAS  
2024-02-29



# Overview of Text Changes to OPA 1

1. All Growth Plan terminology and policy requirements deleted – represents the majority of the required changes
2. Policies on development within and adjacent to significant woodlands made less restrictive
3. New policies that set out desired enhancements to NHS added based on best practices have been added
4. Criteria for significant woodlands added
5. Policies on buffers are now more flexible as they apply in urban areas and rural settlement areas
6. All definitions and policies updated as required to ensure consistency with the new PPS (2024)





# Next Steps

1. All comments made today (December 4, 2024) and received from the public will be considered
2. OPA 1 modifications will be updated if necessary and then sent to the Province for approval
3. If Province proposes changes – these changes will be reviewed and will be the subject of future report to County Council to seek direction
4. Once decision made by Province – no appeals permitted
5. Local municipalities will then be required to implement NHS policies in their Official Plans and Zoning By-laws as required

