

**Legend**

- Settlement Areas
- Oak Ridges Moraine Boundary
- Natural Heritage System (NHS)

**Transportation Network Elements**

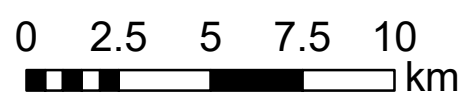
- Highway 401
- County Road/Arterial Road
- Local Road
- Highway 401 Interchange
- Railway

**General Map Elements**

- Alderville First Nation
- Provincial Park
- Waterbody
- Watercourses
- County Boundary

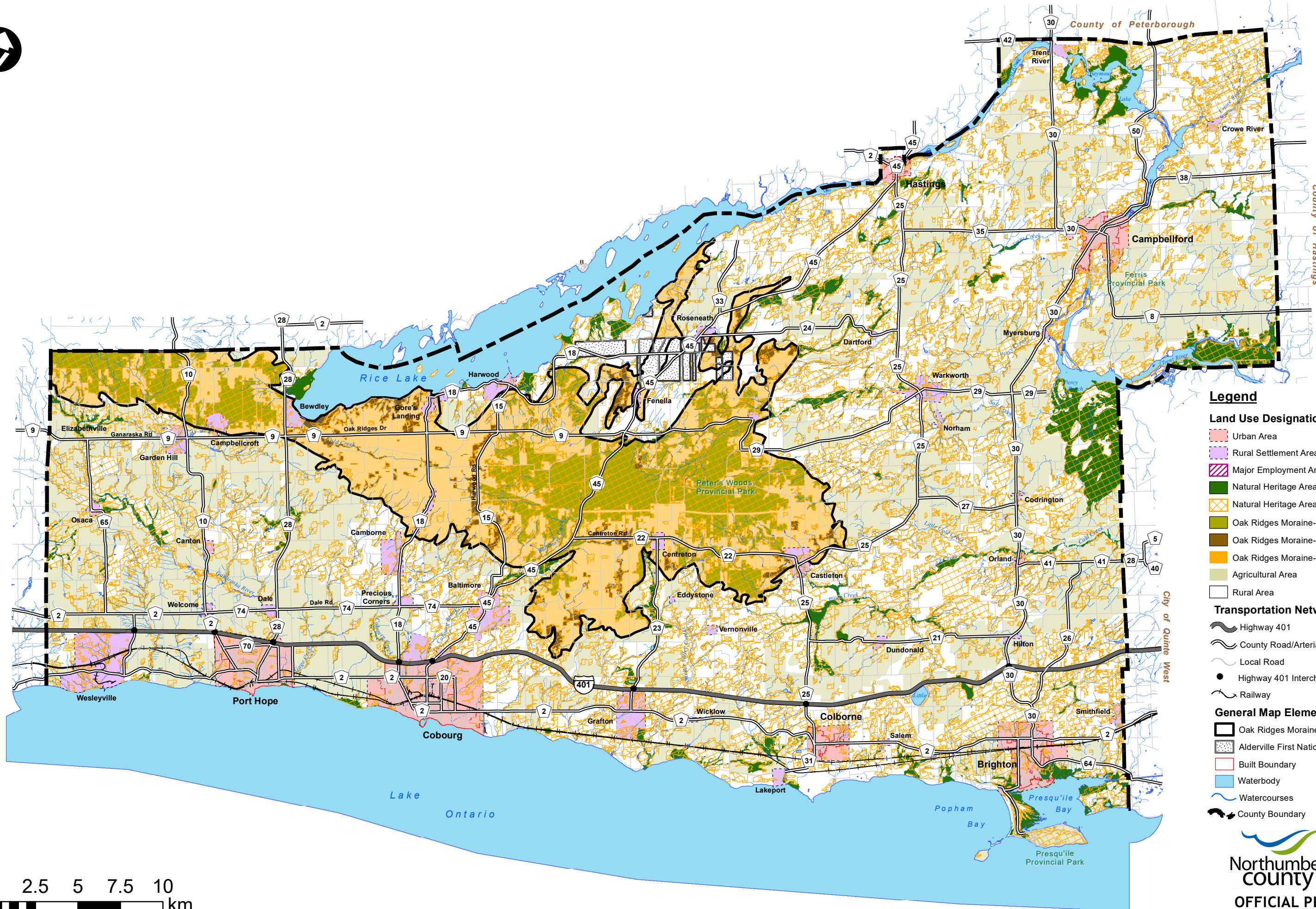


**OFFICIAL PLAN  
SCHEDULE A-1  
SETTLEMENT STRUCTURE AND NATURAL HERITAGE  
SYSTEM**



1:205,373





**Legend**

**Land Use Designations**

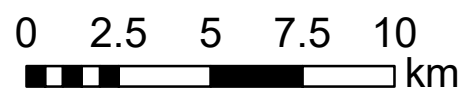
- Urban Area
- Rural Settlement Area
- Major Employment Area (Preferred Location)
- Natural Heritage Area 1 (NHA1)
- Natural Heritage Area 2 (NHA2)
- Oak Ridges Moraine-Natural Core Area
- Oak Ridges Moraine-Natural Linkage Area
- Oak Ridges Moraine-Countryside
- Agricultural Area
- Rural Area

**Transportation Network Elements**

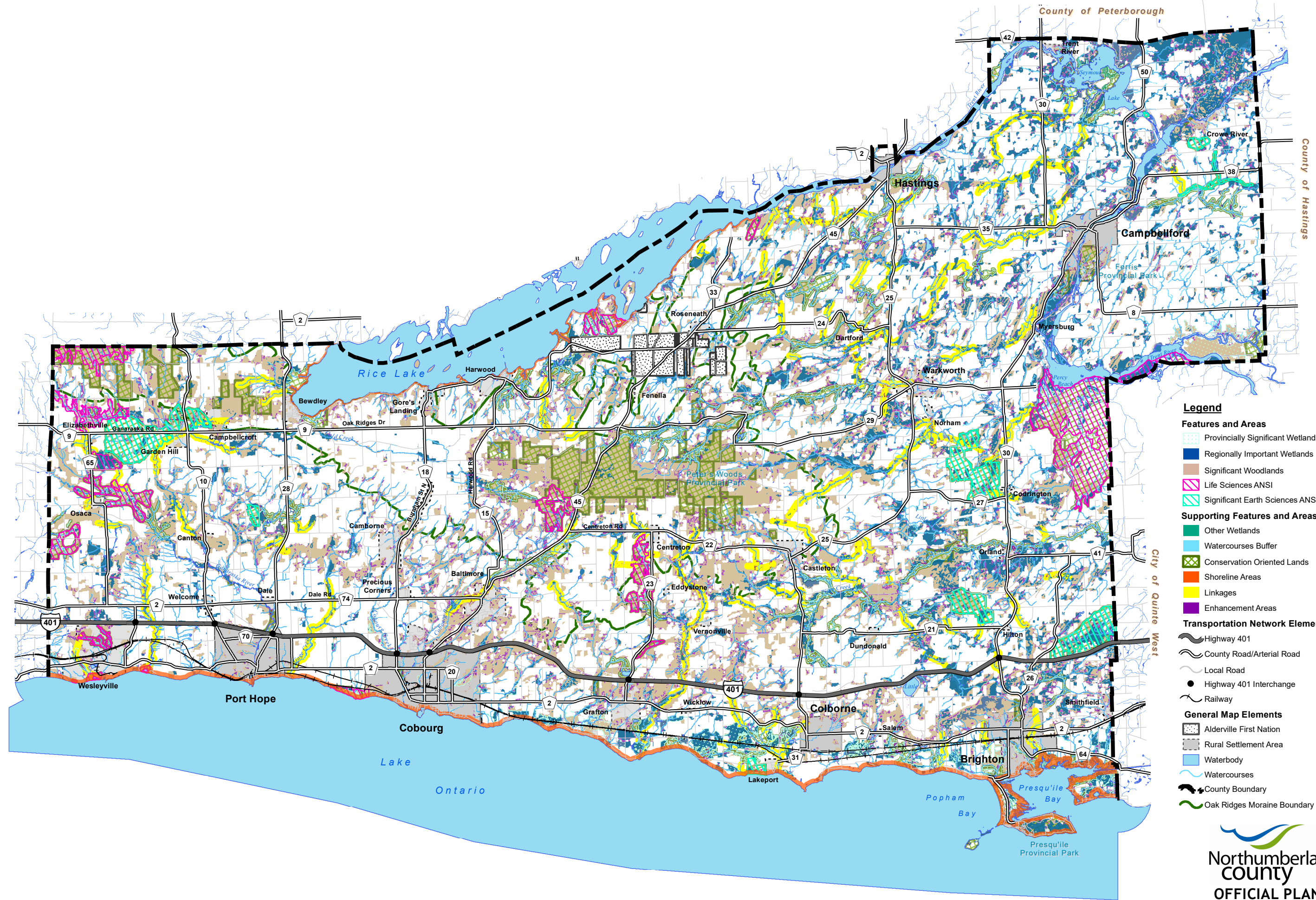
- Highway 401
- County Road/Arterial Road
- Local Road
- Highway 401 Interchange
- Railway

**General Map Elements**

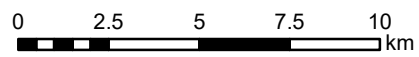
- Oak Ridges Moraine Conservation Plan boundary
- Alderville First Nation
- Built Boundary
- Waterbody
- Watercourses
- County Boundary







- Legend**
- Features and Areas**
- Provincially Significant Wetlands and Coastal Wetlands
  - Regionally Important Wetlands
  - Significant Woodlands
  - Life Sciences ANSI
  - Significant Earth Sciences ANSI
- Supporting Features and Areas**
- Other Wetlands
  - Watercourses Buffer
  - Conservation Oriented Lands
  - Shoreline Areas
  - Linkages
  - Enhancement Areas
- Transportation Network Elements**
- Highway 401
  - County Road/Arterial Road
  - Local Road
  - Highway 401 Interchange
  - Railway
- General Map Elements**
- Alderville First Nation
  - Rural Settlement Area
  - Waterbody
  - Watercourses
  - County Boundary
  - Oak Ridges Moraine Boundary



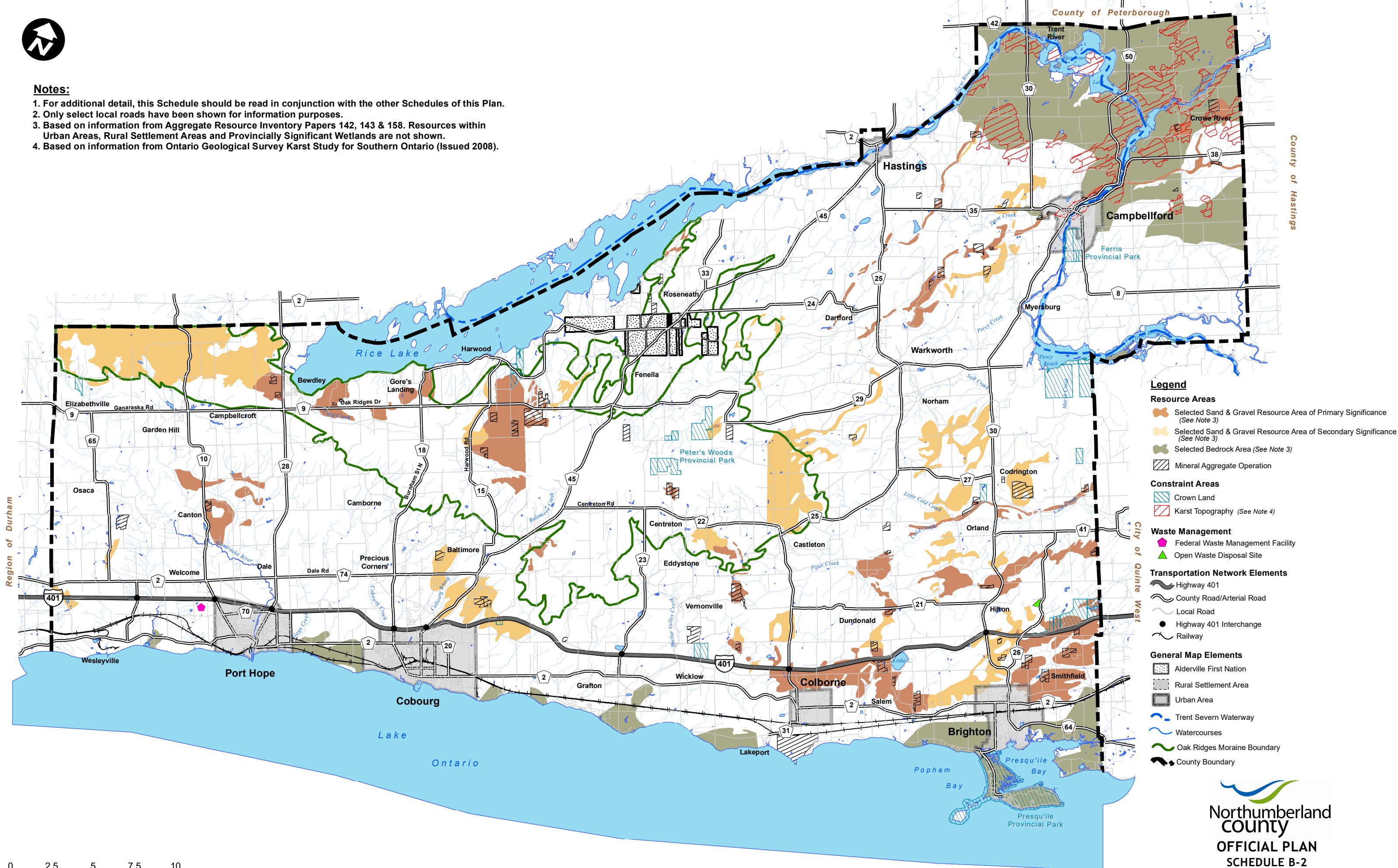
1:208,838





**Notes:**

1. For additional detail, this Schedule should be read in conjunction with the other Schedules of this Plan.
2. Only select local roads have been shown for information purposes.
3. Based on information from Aggregate Resource Inventory Papers 142, 143 & 158. Resources within Urban Areas, Rural Settlement Areas and Provincially Significant Wetlands are not shown.
4. Based on information from Ontario Geological Survey Karst Study for Southern Ontario (Issued 2008).



**Legend**

**Resource Areas**

- Selected Sand & Gravel Resource Area of Primary Significance (See Note 3)
- Selected Sand & Gravel Resource Area of Secondary Significance (See Note 3)
- Selected Bedrock Area (See Note 3)
- Mineral Aggregate Operation

**Constraint Areas**

- Crown Land
- Karst Topography (See Note 4)

**Waste Management**

- Federal Waste Management Facility
- Open Waste Disposal Site

**Transportation Network Elements**

- Highway 401
- County Road/Arterial Road
- Local Road
- Highway 401 Interchange
- Railway

**General Map Elements**

- Alderville First Nation
- Rural Settlement Area
- Urban Area
- Trent Severn Waterway
- Watercourses
- Oak Ridges Moraine Boundary
- County Boundary

